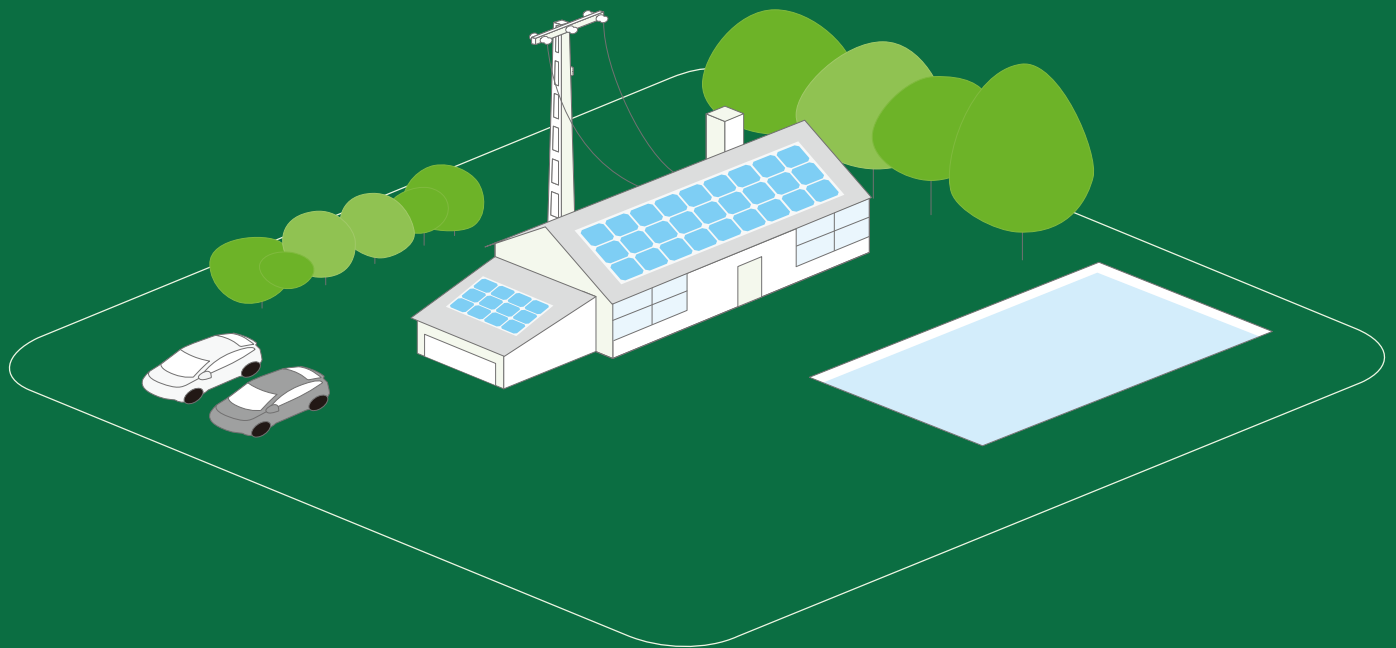





ALL IN ONE SOLAR SYSTEM

RESIDENTIAL ON GRID
PHOTOVOLTAIC SOLAR SYSTEM KIT



An aerial photograph of a residential roof with a grey shingle roof. A large array of blue solar panels is installed on the roof. The house is light-colored with several windows. In the background, other houses and cars are visible on a residential street.

RESIDENTIAL ON GRID 3KW-5KW-10KW



Product Description

Sunpal Power's Residential Solar Pv Kits are the most cost effective and easy PV solutions available for home use. They are ideally suited for any household that is looking to reduce energy costs using an efficient and clean energy system.

Sunpal Power's grid-tied solar power systems are directly connected to the home's electric panel and electric utility grid. Our grid-tied systems allow homeowners to get power from either their solar electric system or the utility grid, switching seamlessly between the grid-tied PV system and the grid. When your grid-tied system is producing more power than your home is consuming, the excess power can often be sold back to the utility in a practice known as net metering. When your system is not producing sufficient power or during non-daylight hours your home can draw power from the utility grid.

Product Benefits

- Generate your own electricity from home and reduce your electric bill
- Increase the value of your home
- Hedge yourself against future utility increases
- Reduce your carbon footprint

Common Application

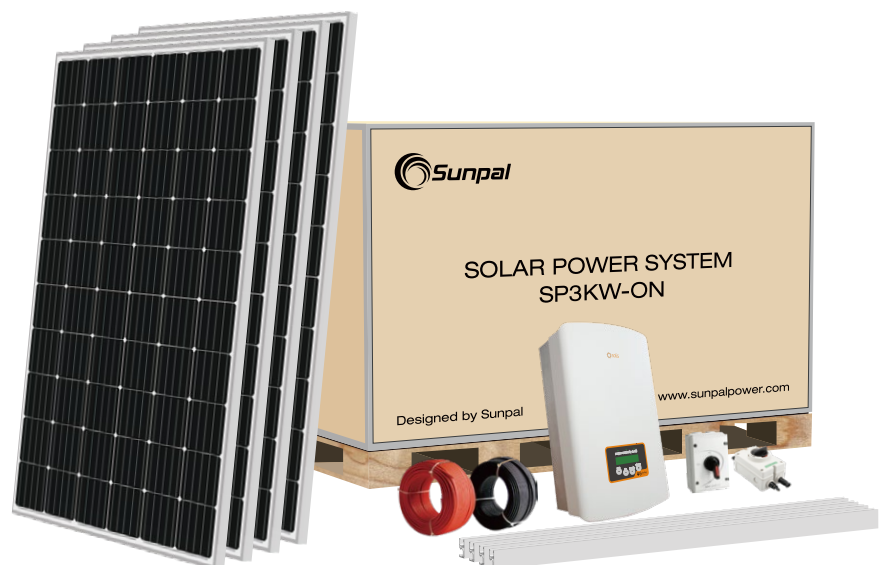
- Homes
- Villas
- Out buildings
- Garages
- Apartments

RESIDENTIAL ON-GRID

PV Kits

Include

- Solar modules
- Solar on-grid inverter
- Custom roof mounting system
- PV & ground wiring harnesses
- DC and AC disconnects
- Wire management kits



PRODUCT MODEL	SP3KW-ON	SP5KW-ON	SP10KW-ON
PV System Size Nominal(kWp)	3.36	5.68	11.2

PV MODULE SPECIFICATIONS(*Mono)

Power (W)	280		
Vmp (V)	31.8		
Voc (V)	38.8		
Isc (A)	9.33		
Imp (A)	8.81		
Dimensions (L x W x H) (mm)	1650*992*35		
PV Module weight (kg)	18.6		
Certifications	CE / TUV (IEC 61215 & IEC 61730) / UL (UL1703)		

*Polycrystalline PV modules also available up on request

INVERTER SPECIFICATIONS

Inverter Size (Kw)	3	5	10
Max DC Power (W)	3500	5800	11500
Max DC Voltage (V)	600		
MPPT Voltage Range (V)	80-500	100-500	100-500
No. of MPPTS	1	2	3
Max AC Power (kVA)	3.3	5	10
Max Output Current (A)	15.7	21.7	45.9
AC Nominal Voltage/Voltage Range (V)	230 / 160 - 285		
AC Grid Frequency Range (Hz)	50 / 60		
Number of Phases	1		
Dimensions (W x H x D) (mm)	310 x 373 x 160	310 x 543 x 160	333 x 573 x 160
Inverter Weight (kg)	7.7	11.5	18
Certifications	UL 1741 / UL 1998 / UL 1699B / IEEE 1547 / FCC Part 15 (Class A & B) / CAN / CSA C2 EN50438 / G83/2 / G59/3 / AS4777.2: 2015 / VDE0126-1-1 / IEC61727 / VDEN4105		

*120V/240V UL inverters also available upon request

BOS

DC/AC Disconnect	1 / 1	2 / 1	4 / 1
*PV Wire Harness - 4mm (m)	100	200	400
*Ground Wire - 4mm (m)	30	50	100

*Extra wire is available up request

SYSTEM LAYOUT

Number of Modules	12	20	40
Number of Inverters	1	1	1
PV Array Surface Area (m ²)	20.4	34	68
PV Array Weight (kg)	223.2	372	744
PV Module String Configuration 600VDC	No. of PV Modules / String	12	10
	Total Strings	1	2
	String Voc (V)	465.6	388
	String Vmp (V)	381.6	318
	String Imp (A)		8.81

PRODUCTION ESTIMATES (kWh AC)

*Projectd Yearly Output at 4 PSH / Day	11.4	19.3	38.1
*Projectd Yearly Output at 5 PSH / Day	14.3	24.1	47.6
*Projectd Yearly Output at 6 PSH / Day	17.1	29.0	57.1

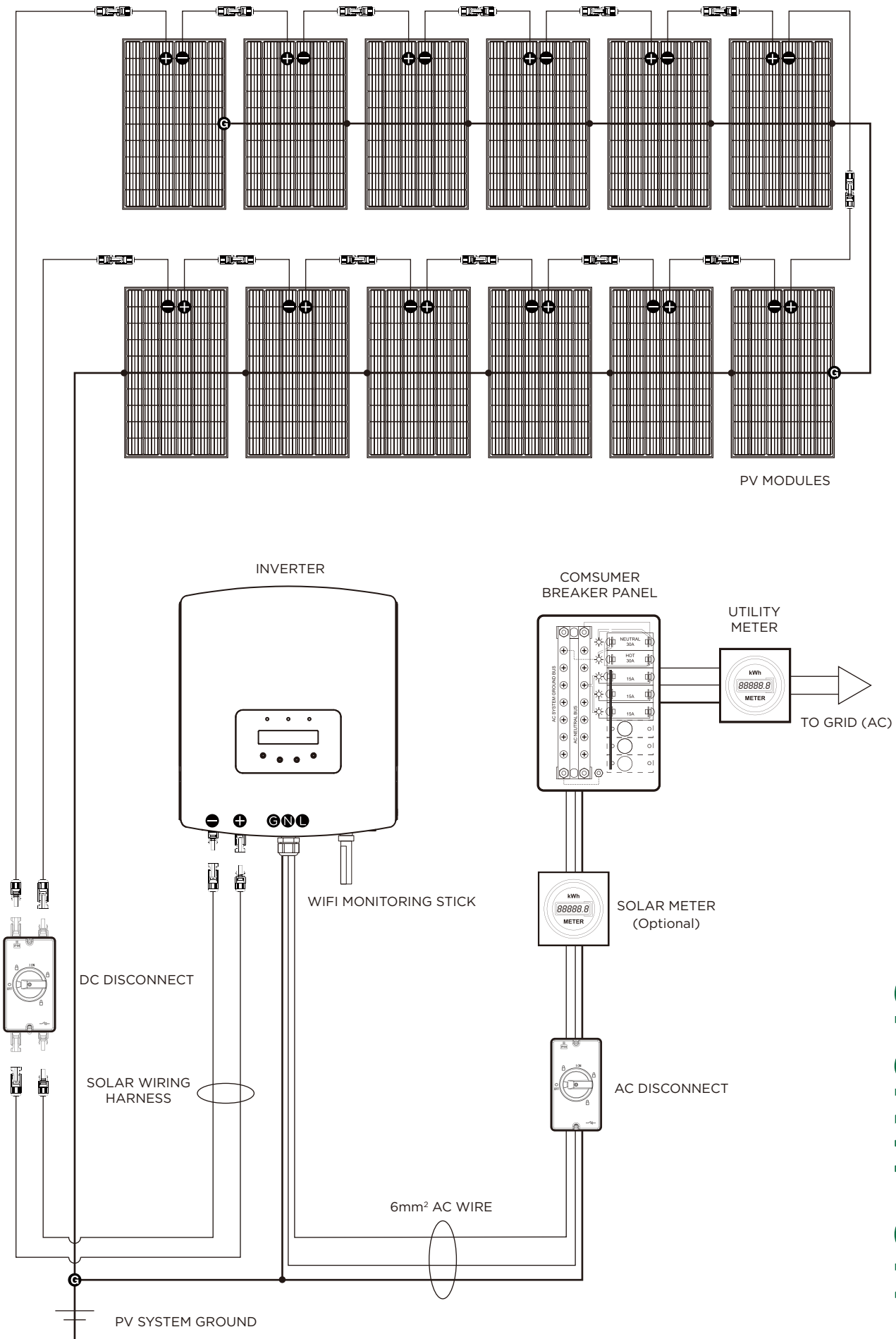
*Based on 85% system efficiency (formula = DC Power x Peak Sunshine Hours / Day x System Efficiency) (PSH = Peak Sunshine Hours)

SYSTEM OPTIONS

Monitoring Device	Wi-Fi Model or GPRS Model
PV Module Type	Monocrystalline(Poly also available upon request)
Mounting System Types	Metal Roof,Asphalt Shingle,Tile Roof,Tin Roof,Flat Concrete

SHIPPING

PV Kit Weight (kg)	375	585	1160
PV Kit Shipping Size	1.7 x 0.7 x 1	1.7 x 1.1 x 1	1.7 x 1.1 x 1
Total Number of Boxes	1	1	2



SP3KW-ON



Phone: +86 551 6586 5992
WhatsApp: +86 183 0554 5727
Email: info@sunpalpower.com

SUNPAL POWER CO.,LTD.
West Changjiang Road,Shushan District,
Hefei City,Anhui Province,China.

www.sunpalpower.com